

PRODUCT FEATURES

- Seamless Spot Free Illumination
- Exterior IP66 Rating
- Ultra Slim Profile
- Easy Installation
- Dimmable

PRODUCT SPECIFICATIONS

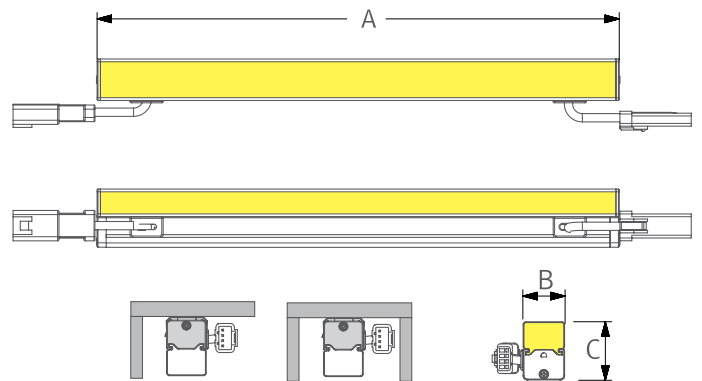
- Voltage: DC 24V
- Operating Temperature: -20°C ~ 45°C
- Lamp Life: 50,000hrs / 70%
- Available Color: 2700K, 3000K, 4000K, RGB
- Color Rendering: Ra>85
- Energy Efficiency: 85lm/W
- Degree of Protection: IP66

DIMENSIONS

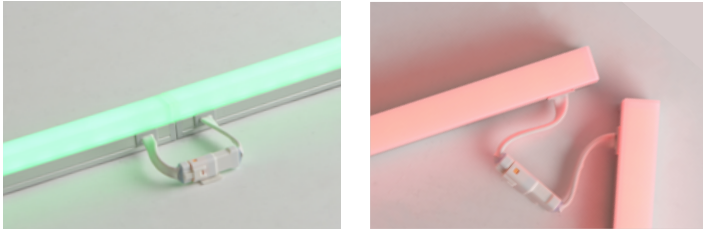
* Pending factory availability



Model Number	Voltage Input (V)	Power Input (W)	A (mm)	B (mm)	C (mm)
ODV3-(color)K-24V	DC24	2.9	140.4	15	22.1
ODV6-(color)K-24V	DC24	5.8	280.5	15	22.1
ODV12-(color)K-24V	DC24	11.6	560	15	22.1
ODV18-(color)K-24V	DC24	17.4	839	15	22.1
ODV4-RGB-24V	DC24	4.2	189	15	22.1
ODV6-RGB-24V	DC24	6.2	281	15	22.1
ODV12-RGB-24V	DC24	12.5	560	15	22.1
ODV18-RGB-24V	DC24	18.7	839	15	22.1



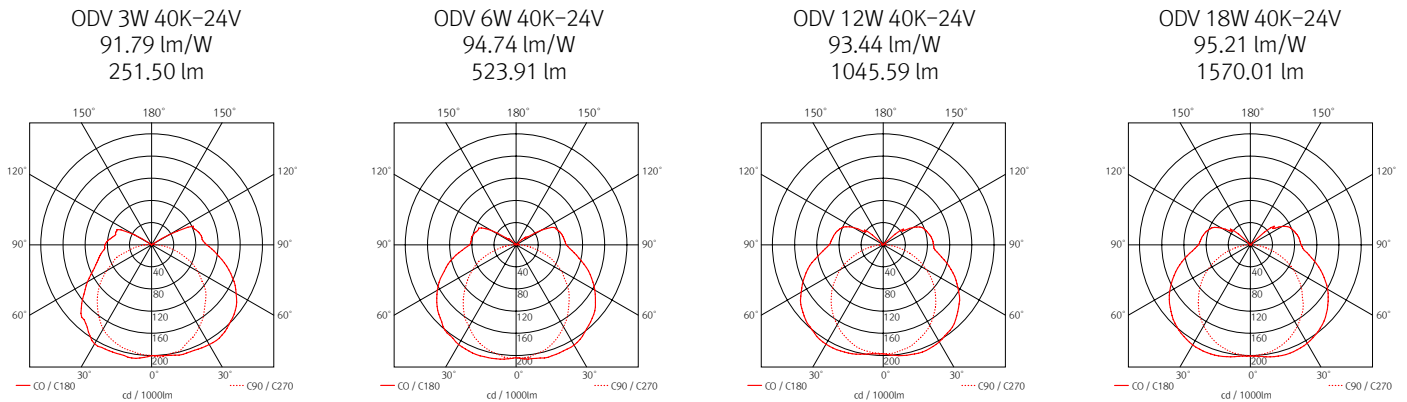
EASY CONECTION



FLEXIBLE CONNECTING FIXTURE

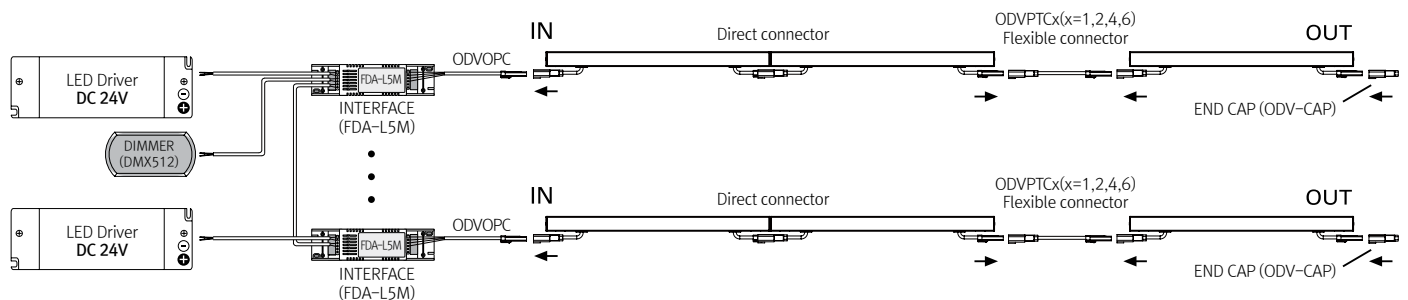


BEAM SPREADS



CONNECTION

IF LONGER RUNS ARE REQUIRED USE SIDE FEED UNIT ODV3-(COLOR)K-24V-S TO CONTINUE SEAMLESS LIGHTING.
NOT TO EXCEED 90% OF DRIVER RATED WATTAGE.

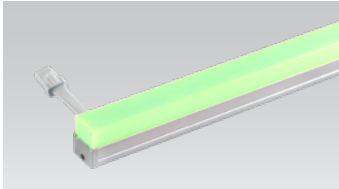


COMPONENTS



FLX Stix ODV

- Single Kelvin
- __ ODV4-(color)K-24V (4W)
 - __ ODV6-(color)K-24V (6W)
 - __ ODV12-(color)K-24V(12W)
 - __ ODV18-(color)K-24V (18W)



FLX Stix ODV

- RGB color changing
- __ ODV4-RGB-24V (4W)
 - __ ODV6-RGB-24V (6W)
 - __ ODV12-RGB-24V(12W)
 - __ ODV18-RGB-24V (18W)



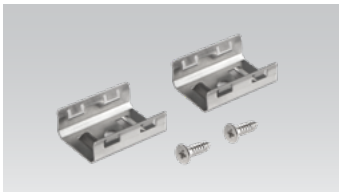
Connecting Cable

- __ ODVPTC 150mm
- __ ODVPTC1 300mm
- __ ODVPTC2 600mm
- __ ODVPTC4 1,200mm
- __ ODVPTC6 1,800mm



Power Cable

- __ ODVPC (Non dimming)
2,500mm/4,000mm/6,000mm
- __ ODVOPC (Dimming)
2,500mm/4,000mm/6,000mm



Mounting Bracket

- __ ODV-BRACKET
- Included in fixture



Mounting Bracket

- __ ODV-CAP
- Included in fixture



12 Port Hub

- __ 12 Way distributor
- Included with Cord and Plug drivers.
Order separately for 3rd Party Drivers



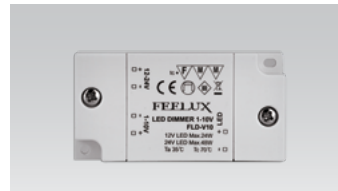
LED Drivers

- __ FLC30-24V/T (30W)
 - __ FLC75-24V/T (75W)
- with distributor and power cord
(1,800mm)



LED Driver

- __ FLC200-24V/T (200W)
- with 12way distributor



Dimming Interface (0-10V/1-10V)

- __ FDC-L10 (Max. 100W)



Dimming Interface

- __ FDA-L2MO (0-10V/1-10V, DMX512)
Max. 200W (100W/CH, 2CH)
- __ FDA-L5M (DMX512)
Max. 200W (50W/CH, 5CH)



Dimming Interface (Dail)

- __ FDD-L1DA
- Max. 200W (100W/CH, 1CH)